

UNDERSTANDING THE HEALTH OF THE ADELAIDE REGION

SOUTHERN ADELAIDE REGION

DEMOGRAPHIC & SOCIAL PROFILE

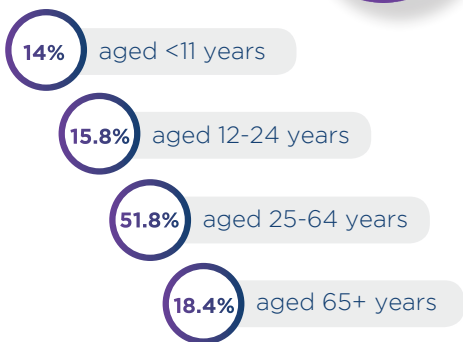
OVER **355,500** PEOPLE LIVE IN THE SOUTH - that's 29.8% of the total Adelaide population

 by 2030 the southern population should increase to over 433, 000



The AVERAGE AGE of a person living in the south is...

41 YEARS



LIFE EXPECTANCY
in the south

85.2 years



81.2 years

1.2%

of people in the south identify as **ABORIGINAL &/or TORRES STRAIT ISLANDER**

 that's around 4200 people



MEDIAN WEEKLY INCOME
IN THE SOUTH IS **\$1281**

that's higher than the metro region average of \$1246

5.8% of people in the south report needing help in their day to day lives due to **DISABILITY**

that's over 20,600 people



Suburbs w/ highest & lowest weekly household income:
 Springfield \$3250
 Coromandel East \$2024
 Hackham West \$792
 Christies Downs \$770



11.4%

of people speak a language other than english at home

 compared to 21% across the whole Adelaide metro region

HEALTH SERVICE LANDSCAPE

When compared to the Adelaide metro region as a whole, the south has...

HEALTH WORKFORCE

GPs | **444** of 1623
 practice nurses | **184** of 604
 psychiatrists | **51** of 252
 psychologists | **230** of 1086
 community pharmacists | **224** of 797

82
of 319

GENERAL PRACTICES

2
of 9

PUBLIC HOSPITALS

102
of 382

PHARMACIES

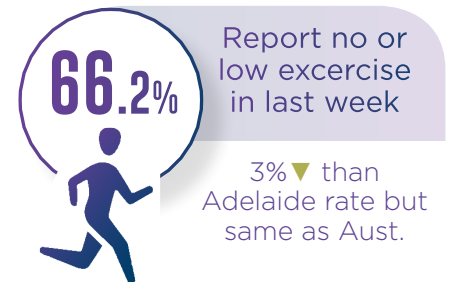
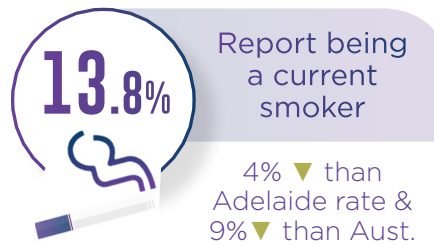
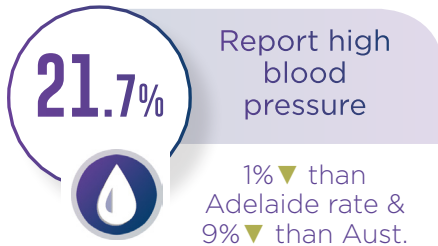
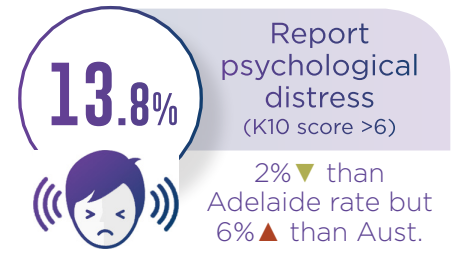
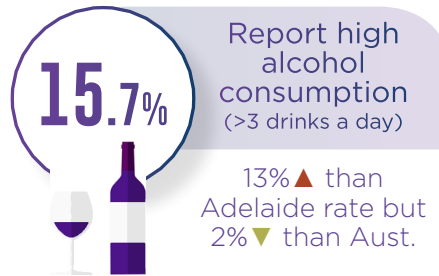


phn
ADELAIDE

An Australian Government Initiative

RISK FACTORS

The following risk factors are associated with poorer health outcomes and are high in prevalence in southern Adelaide.



HEALTH CONDITIONS IMPACTING SOUTHERN ADELAIDE



Mental Health & Behavioural

21.6% report mental health & behavioural conditions

6% ▲ than Adelaide
7% ▲ than Aust. rate



Arthritis

15.3% report arthritis

equal to Adelaide
2% ▲ than Aust. rate



Asthma

13.3% report asthma

8% ▲ than Adelaide
15% ▲ than Aust. rate



Heart, Stroke & Vascular

4.6% report diabetes

equal to Adelaide
3% ▼ than Aust. rate

POTENTIALLY PREVENTABLE HOSPITAL ADMISSIONS

Of the **11, 173** potentially preventable hospitalisations (PPH) in the south across 2017-18, the most prevalent presenting conditions were:



362 PPH
per 100, 000



278 PPH
per 100, 000



239 PPH
per 100, 000

This resource draws on data from a range of reliable population health sources. Last updated July 2020. For references & other similar resources about the health of the Adelaide region visit: adelaidephn.com.au/healthdata

adelaidephn.com.au | enquiry@adelaidephn.com.au | 8219 5900

phn
ADELAIDE

An Australian Government Initiative