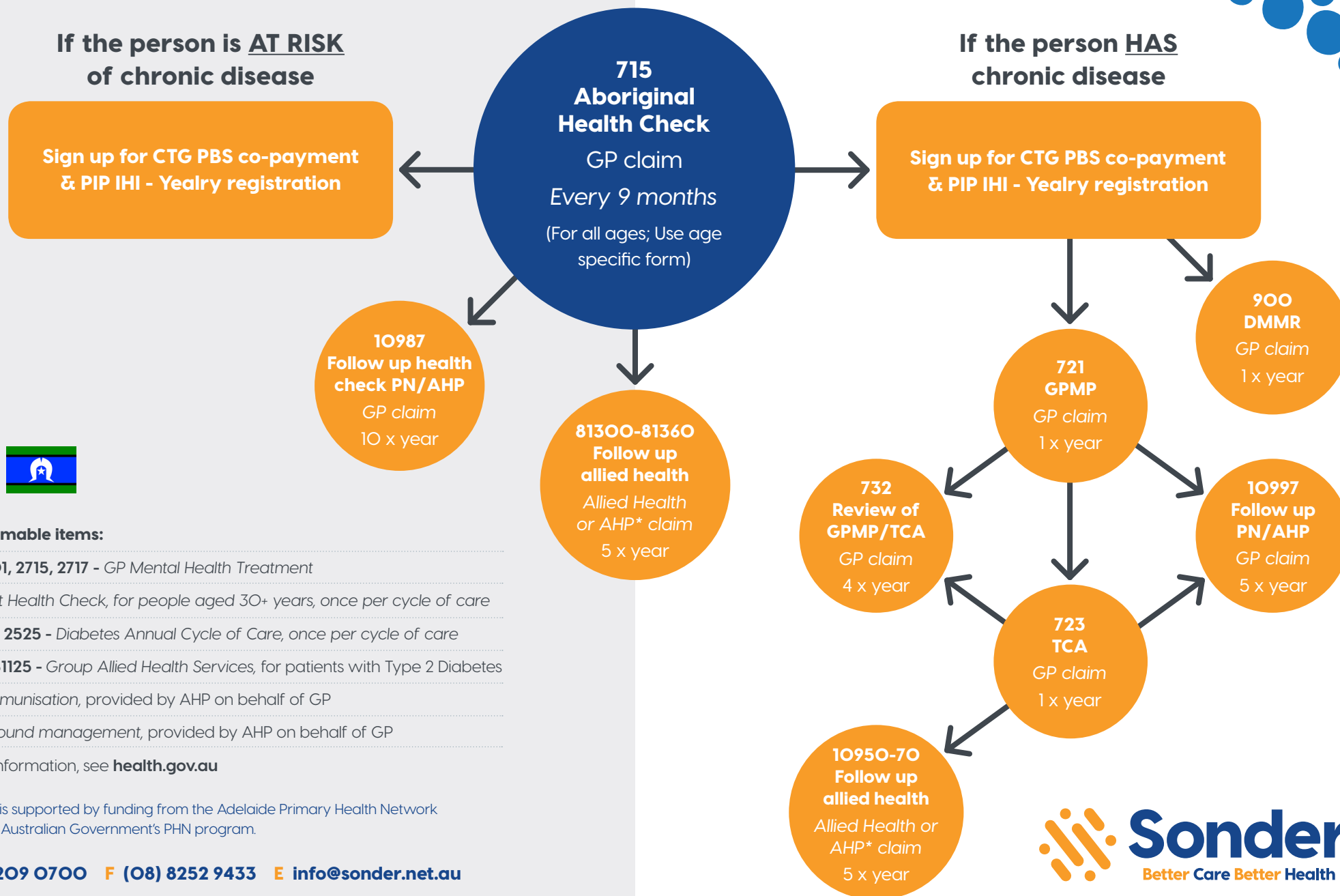


MBS Flowchart for Chronic Disease

Aboriginal and/or Torres Strait Islander People



Other claimable items:

2700, 2701, 2715, 2717 - GP Mental Health Treatment

699 - Heart Health Check, for people aged 30+ years, once per cycle of care

2517, 2521, 2525 - Diabetes Annual Cycle of Care, once per cycle of care

81100 to 81125 - Group Allied Health Services, for patients with Type 2 Diabetes

10988 - Immunisation, provided by AHP on behalf of GP

10989 - Wound management, provided by AHP on behalf of GP

For more information, see health.gov.au

This service is supported by funding from the Adelaide Primary Health Network through the Australian Government's PHN program.

P (08) 8209 0700 F (08) 8252 9433 E info@sonder.net.au